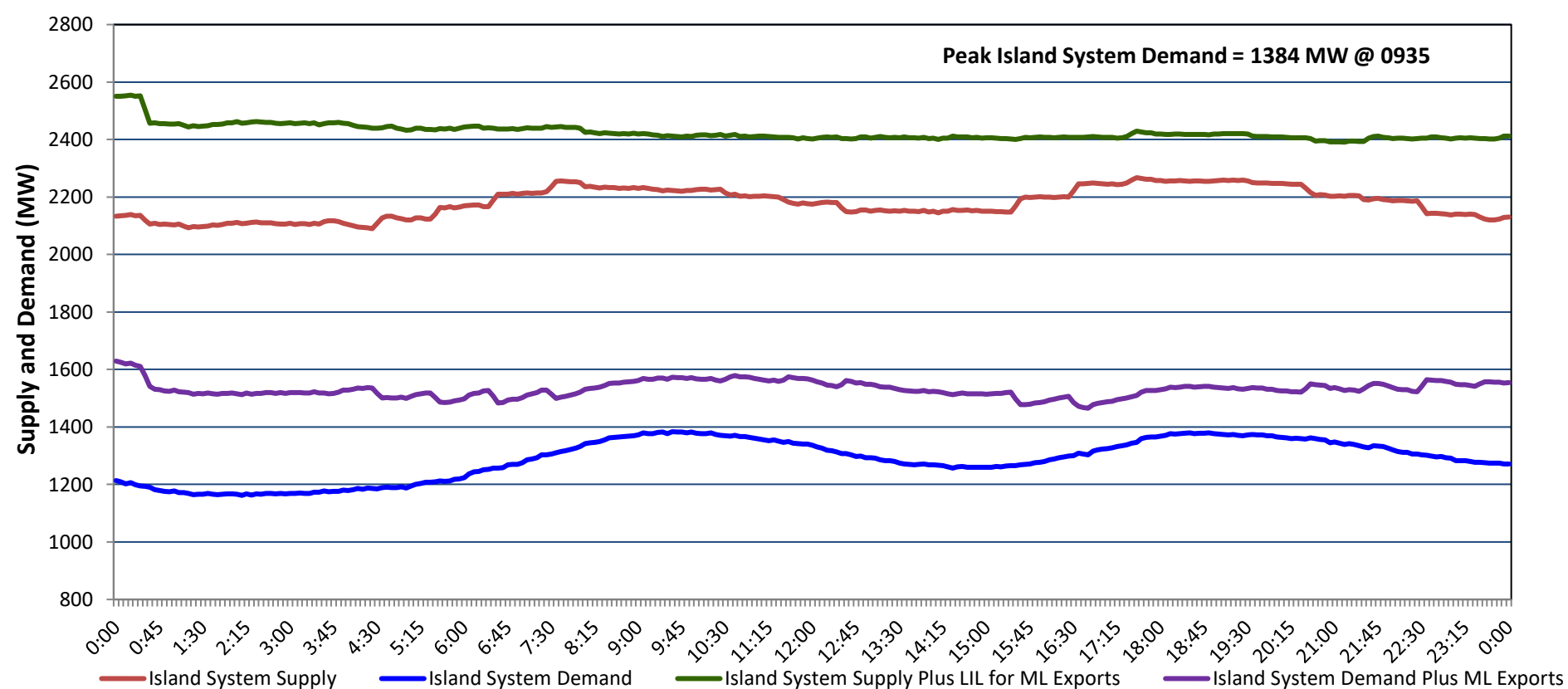


## Newfoundland Labrador Hydro (NLH)

**Supply and Demand Status Report Filed Monday, February 24, 2025 (Revised - May 8, 2025)**

### Section 1 Island Interconnected System - Supply, Demand & Exports Actual 24 Hour System Performance For Saturday, February 22, 2025



#### Island Supply Notes For February 22, 2025 <sup>1</sup>

**A** As of 1348 hours, February 19, 2025, Holyrood Unit 1 available at 105 MW due to forced derating (170 MW).

**B** At 0801 hours, February 22, 2025, Holyrood Unit 3 available at 130 MW due to forced derating (150 MW).

### Section 2 Island Interconnected System - Supply, Demand & Outlook

Sun, Feb 23, 2025	Island System Outlook <sup>2</sup>	Seven-Day Forecast	Island System Daily Peak Demand (MW)	
			Forecast <sup>8</sup>	Adjusted <sup>6</sup>
Island System Supply: <sup>4</sup>	<b>2,210 MW</b>	Sunday, February 23, 2025	<b>1,435</b>	<b>1,338</b>
NLH Island Generation: <sup>3,7</sup>	<b>1,610 MW</b>	Monday, February 24, 2025	1,385	1,289
NLH Island Power Purchases: <sup>5</sup>	105 MW	Tuesday, February 25, 2025	1,405	1,309
NP and CBPP Owned Generation:	210 MW	Wednesday, February 26, 2025	1,245	1,151
LIL/ML Net Imports to Island: <sup>9</sup>	285 MW	Thursday, February 27, 2025	1,275	1,180
		Friday, February 28, 2025	1,310	1,215
7-Day Island Peak Demand Forecast:	<b>1,435 MW</b>	Saturday, March 1, 2025	1,295	1,200

#### Island Supply Notes For February 23, 2025

- Notes:
1. Generation outages for running and corrective maintenance are included. These are not unusual for power system operations. They generally do not impact customer supply. Hydro schedules outages to system equipment whenever possible to coincide with periods when customer demands are low and sufficient supply reserves are available. However, from time to time equipment outages are necessary and reserves may be impacted.
  2. As of 0800 Hours.
  3. Gross continuous unit output.
  4. Gross output from all Island sources (including Note 3).
  5. NLH Island Power Purchases include: ML Imports, Exploits Generation, Rattle Brook, Star Lake, Wind Generation and capacity assistance (when applicable).
  6. Adjusted for interruptible load and the impact of voltage reduction when applicable.
  7. Due to limitations inherent in the design of combustion turbines, the output of combustion turbines may be reduced in the event that ambient temperatures exceed the threshold required for full rated output. This threshold is dependent on the design of each turbine.
  8. Does not include ML Exports.
  9. LIL Import sunk in the Island System. Actual LIL flows will be restricted by various system conditions including, but not limited to, Island Load, ML Exports and Avalon Unit status.

### Section 3 Island Peak Demand and Exports Information Previous Day Actual Peak and Current Day Forecast Peak

Sat, Feb 22, 2025	Island Peak Demand <sup>10</sup>	9:35	1,384 MW
	Exports at Peak		189 MW
	LIL Net Imports to Island		6,157 MWh
Sun, Feb 23, 2025	Forecast Island Peak Demand		1,435 MW

Notes: 10. Island Demand is supplied by NLH generation and purchases, LIL Imports plus generation owned and operated by Newfoundland Power and Corner Brook Pulp & Paper (Deer Lake Power, DLP).